

Open Burner & Hotplate Griddle Combination

IAPMO-R&T

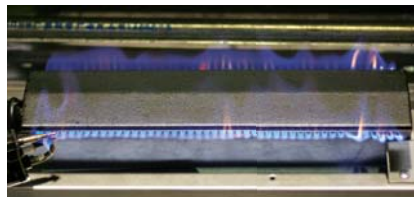


GasMark
GMK10168



Features:

- GasMark Certified.
- Free standing design.
- Height adjustable feet.
- Undershelf storage space.
- Flame failure safety device.
- Griddle plate thickness: 16mm.
- Hotplate is piezo & pilot ignition.
- Open burners are manual ignition.
- Rated at: 20MJ/hr per grill burner.
28MJ/hr per open burner.
- Removable: Burner cap.
Spillage tray.
Cast iron trivets.



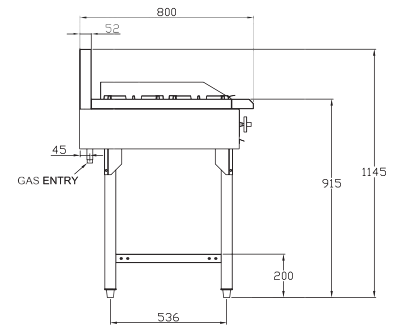
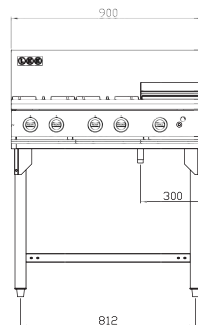
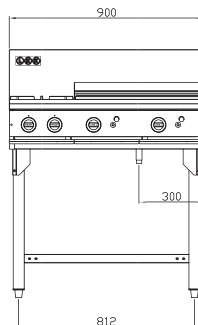
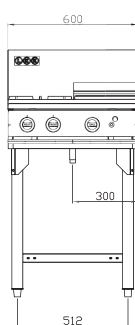
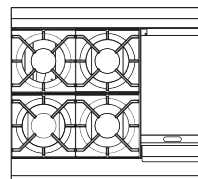
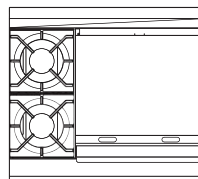
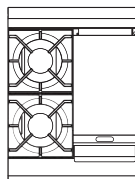
LKKOB6B



LKKOB6C



LKKOB4C



Specification

Model	Natural Gas	LP Gas	Dimensions (W x D x H)
LKKOB4C	76MJ/h	76MJ/h	600mm x 800mm x 900mm (working height)
LKKOB6B	96MJ/h	96MJ/h	900mm x 800mm x 900mm (working height)
LKKOB6C	132MJ/h	132MJ/h	900mm x 800mm x 900mm (working height)

Height including splashback is 1130mm

Inlet: Gas: 3/4" BSP

• Specifications and design are subject to change without notice • Pictures are for illustrative purposes only • 2015 July



New Zealand Phone: (+64) 09 837 2960 Fax: (+64) 09 836 9168
(Head Office) 18 Paramount Drive, Henderson, Auckland
www.lkk.co.nz sales@lkk.co.nz

Australia Phone: 1300 655 715 Fax: (+61) 02 8587 0033
47 George St, Clyde Sydney, NSW 2142, Sydney
www.lkk.com.au sales@lkk.com.au

Authorised Retailer: